



Kansai-kan of the National Diet Library



The Purpose of the Kansai-kan

A library offering large-scale storage and a facility supplying library services in a highly advanced information society.

The Kansai-kan of the NDL was established in April 2002 and opened in October of the same year. It is designed to secure storage space for the long term, to meet the demands for library materials and information in the advanced information society, and to serve as a large-scale research library in the Kansai region. It is located in Kansai Science City (Keihanna Science City), a research complex straddling the borders of Kyoto, Osaka, and Nara Prefectures.

Key Roles of the Kansai-kan

The Kansai-kan of the NDL is tasked with three following key roles.



Providing materials



Library Cooperation Programs



Digital Library Programs



About the National Diet Library

The National Diet Library (NDL) is the parliamentary library of the National Diet of Japan and was founded in 1948 by the National Diet Library Law, in accordance with Article 130 of the Diet Law, which states in part that “The National Diet Library shall be established in the Diet by a separate law, in order to assist Diet Members in their study and research.”

Mission

“The NDL is hereby established as a result of the firm conviction that truth makes us free and with the object of contributing to international peace and the democratization of Japan as promised in our Constitution.”
(From the Preamble of the National Diet Library Law)

Role

“The National Diet Library shall collect books and other library materials for the purpose of assisting the members of the National Diet in the performance of their duties and also for the roles of providing certain library services as hereinafter specified for the executive and judicial agencies of the national government and for the people of Japan.”
(From Article 2 of the National Diet Library Law)

Network

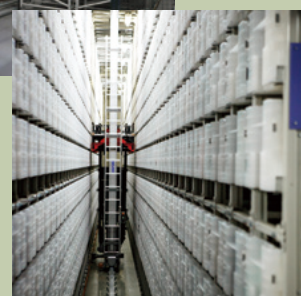
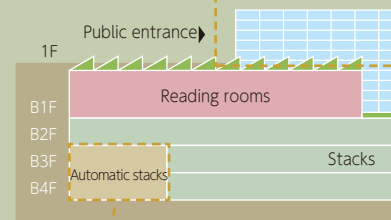


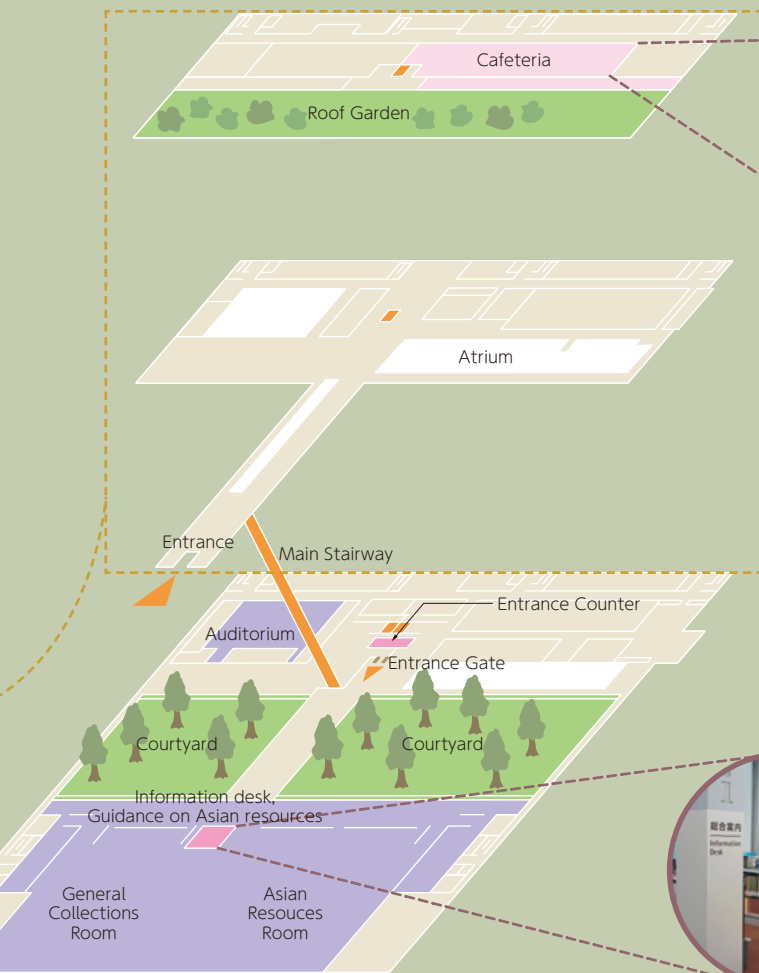
Support to the Diet

Acquisition, cataloging and preservation of materials and information

Providing the public with access to information resources

Cooperation with affiliated institutions





Cafeteria

Curry rice and other Japanese lunch fare are offered.
Open from 11:00 a.m. to 1:30 p.m.

General Collections Room

General information books, reference books, dictionaries, and statistics are organized by subject matter and available for use.

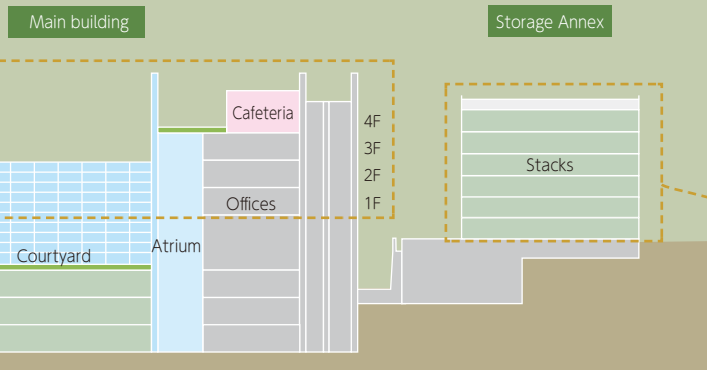
Asian Resources Room

Reference books, magazines, and other materials in Asian languages are available for use.

Reading Room



Information desk
Guidance on Asian resources



Storage Annex



Stacks at the Kansai-kan

- ① Main building B2F-B4F
- ② Storage annex 1F-6F (Completed in 2020)

Number of materials

20,000,000 items

Ambient environment

Temperature of about 22°C
Humidity of about 55%

Main Collections

- Foreign periodicals, major Japanese periodicals, science and technology materials, Japanese doctoral dissertations, scientific research reports under grants from the Ministry of Education, Culture, Sports, Science and Technology and talking books of academic literature for persons with print disabilities
- Major reference books, basic books, bibliographies, catalogs and government publications published in Japan and overseas
- Asian-language and Asia-related materials

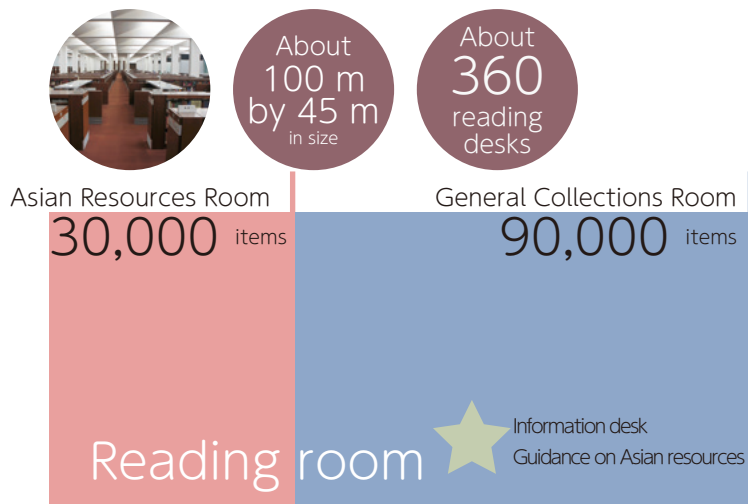
Main Collections in the Tokyo Main Library

- Books, periodicals, newspapers and electronic publications published in Japan and collected via the Legal Deposit System
- Foreign books and newspapers
- Special collections: Parliamentary and legislative documents, official publications, publications of international organizations, maps, rare books and old materials, modern Japanese political history documents, materials on the Allied Occupation of Japan, audio-visual materials



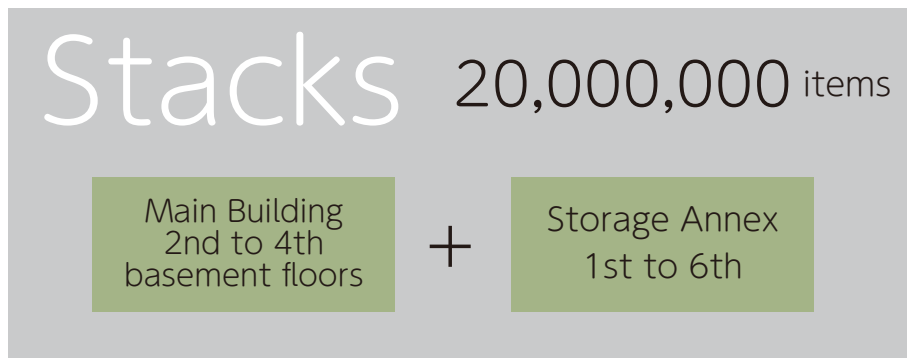
Providing materials

1 On-site Services

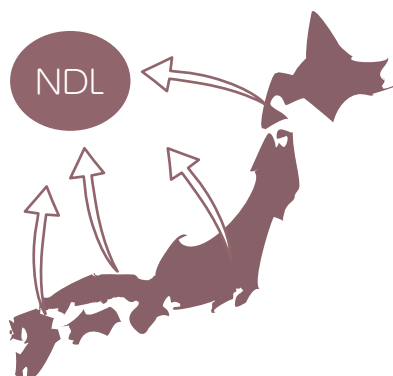


- Access to printed materials from open shelves and digital materials
- Copying of library materials
- Using Study Rooms and Group Study Rooms
- Reference services
 - Guidance on research methodology, the use of bibliographies and catalogs, and information on related research facilities
- Requests for materials in the closed stacks (User registration required)
- Some of the materials that are held in the Tokyo Main Library and/or the International Library of Children's Literature are available for inter-site request (User registration required)

Patrons at the Kansai-kan must be 18 years of age or older to use library services. Identification is required for user registration.



2 Remote Services



The National Diet Library provides the public across Japan with access to materials held in the National Diet Library. The interlibrary loan service for NDL materials is available through nearby libraries and requested items can be read inside the library. Copies of NDL materials can be requested and obtained through nearby libraries. Registered users can directly request copies of library materials via NDL Search.





Library Cooperation Programs

The Tokyo Main Library, the Kansai-kan and the International Library of Children's Literature share responsibility for the library cooperation activities of the NDL. The Tokyo Main Library is responsible for setting policy in this area, and for administering collaboration with foreign libraries (other than the delivery of resources). The Kansai-kan carries out support operations for other libraries (with respect to the National Union Catalog Network, the Collaborative Reference Database Project, studies on library and information science, training and exchange, cooperation with libraries providing services for persons with disabilities, and assigning and managing ISIL (the International Standard Identifier for Libraries and Related Organizations)) and serves as the access point for the sharing of NDL resources. The International Library of Children's Literature offers support services to school libraries and other institutions involved in juvenile services. The NDL's three facilities are united to further improve activities in support of library cooperation.

1 Cooperative Network Activities

The Kansai-kan handles the planning and administration of the projects for the NDL National Union Catalog Network and the Collaborative Reference Database System available via the internet to promote library cooperation. The databases are also made available to the public.



Collaborative Reference Database System

2 Studies on Library and Information Science

The Kansai-kan stays abreast of trends in library operations and library and information science in Japan and other countries, and keeps other libraries informed through publications and email newsletters. The digital versions of our publications and blogs are provided on our website through the Current Awareness Portal.



Current Awareness Portal

3 Training and Cooperation

The Kansai-kan plans and operates training programs for librarians from Japan and other countries. It carries out in-person group training programs, remote training programs via the internet, and training programs by dispatched NDL staff. Cooperation between related institutions is also promoted through these training sessions.

4 Cooperation with libraries providing services for persons with disabilities

The Kansai-kan provides the Data Transmission Service for Persons with Print Disabilities, making materials in DAISY, text, or other accessible formats created by public libraries available for download on Mina Search (NDL Materials Search for Persons with Disabilities). The Kansai-kan also creates recording data and text data of academic literature in response to requests from libraries.





Digital Library Programs

The NDL's plans for digital information services via the internet are formulated at the Tokyo Main Library. The Digital Library Division of the Kansai-kan is responsible for the development, operation and review of information systems, and the collection, development and delivery of digital library contents. The NDL has used information technology effectively for a variety of digital information services.

1 Digital Library Contents

Digitized books and periodicals held in the NDL are provided via the internet after copyright clearance while those without copyright clearance are provided only within the library buildings. Digitized materials which are still under copyright are available inside the NDL premises. Materials that are out of print or otherwise difficult to obtain are accessible from public libraries and university libraries which have applied for the Digitized Contents Transmission Service for Libraries. The Digitized Contents Transmission Service for Individuals is also available to anyone who is an official registered user of the NDL and who has agreed to the Terms of Service.

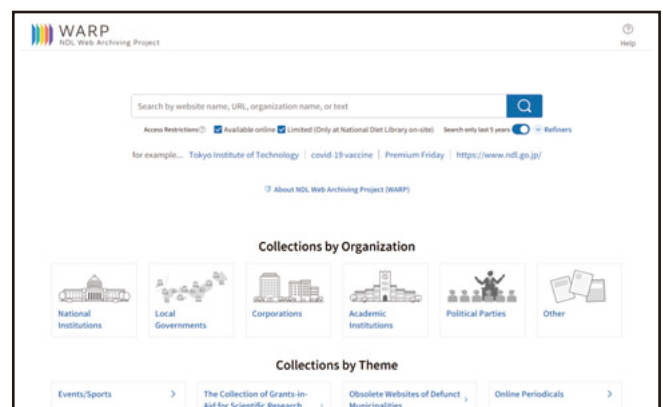


NDL Digital Collection



2 Collection and Preservation of Internet Resources

The NDL's Web Archiving Project (WARP) collects content from the websites of the national government, municipal governments, corporations and organizations, universities, and political parties as well as websites promoting public events and those related to the Great East Japan Earthquake. This archived content can be accessed via the internet from the NDL website, provided that the publisher has granted permission. Online publications defined as corresponding to books or serials(e-books or e-magazines) are also collected and available either via the internet or on the premises at the NDL.



Web Archiving Project (WARP)



NDL in figures

(as of FY2024)

Collections

Total	48,113,609 items
Books	12,469,225 items
Periodicals and newspapers	21,180,680 items
Microforms	9,144,027 items
Recorded materials	833,033 items
Machine-readable materials(CDs, DVDs, etc.)	196,197 items
Maps	604,738 items
Manuscripts	476,975 items

Number of materials newly acquired in FY2024

Total	616,815 items
Books	167,602 items
Periodicals and newspapers	407,376 items
Microforms	3,087 items
Recorded materials	8,715 items
Machine-readable materials(CDs, DVDs, etc.)	6,250 items
Maps	3,961 items
Manuscripts	10,106 items

Storage capacity

●Tokyo Main Library	12,000,000 volumes
●Kansai-kan of the NDL	11,000,000 volumes
●International Library of Children's Literature	1,050,000 volumes

Services for the public

Reference services	604,011 cases
Reading services	1,722,239 items
Copying services	1,156,914 cases
On-site users	669,616 people
●Tokyo Main Library	457,444(1,651 per day on average)
●Kansai-kan of the NDL	73,478(265 per day on average)
●International Library of Children's Literature	138,694(492 per day on average)

Collection in the Kansai-kan

(as of September 2025, approximate totals)

●Books		●Science and technology materials	
In Japanese	4,124,000 items	Foreign technical reports	2,648,000 items
In Western languages	763,000 items	Foreign doctoral dissertations	478,000 items
●Serials		Foreign academic society papers	205,000 items
Periodicals and newspapers in Japanese	82,400 titles	Conference proceedings in Western languages	103,000 items
Periodicals and newspapers in Western languages	45,500 titles	Japanese and foreign standards	178,000 items
●Scientific research reports under grants from the Ministry of Education, Culture, Sports, Science and Technology	169,700 items	●Materials in Asian languages other than Japanese	
●Domestic doctoral dissertations	603,000 items	Books	513,000 items
		Periodicals and newspapers	9,200 titles

Major Digital Collections

(as of October 2025, approximate totals)

●NDL Digital Collection (including materials provided only inside the library)		Audio-visual materials	10,000 items
Japanese Books	2,530,000 items	Materials on the Allied Occupation of Japan	130,000 items
Japanese Periodicals	1,400,000 items	Prange Collection	50,000 items
Rare books and Old Materials	110,000 items	Historical Recordings	50,000 items
Digitized doctoral Dissertations	320,000 items	Digitized materials from the collections of other institutes	20,000 items
Japanese Newspapers	240,000 items	Online periodicals and books	1,640,000 records
Official Gazettes	20,000 items	●Web Archiving Project(WARP)-websites	14,500 titles
Imperial Diet Collection	3,000 items	●Collaborative Reference Database Project	344,000 cases
Modern Japanese political history materials	20,000 items		
Maps	3,000 items		

Guide for Visitors

■ Age limit 18 years or older in principle

*If you are under 18, please ask for an individual consultation.
For details, please refer to the NDL website.

■ Use of materials only in the library (no materials may be taken out)



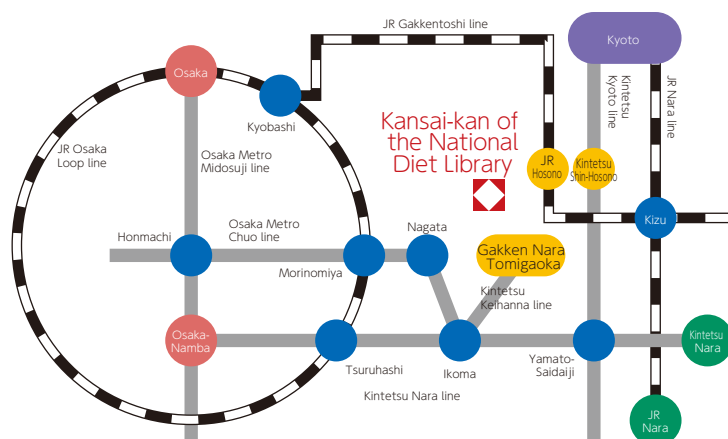
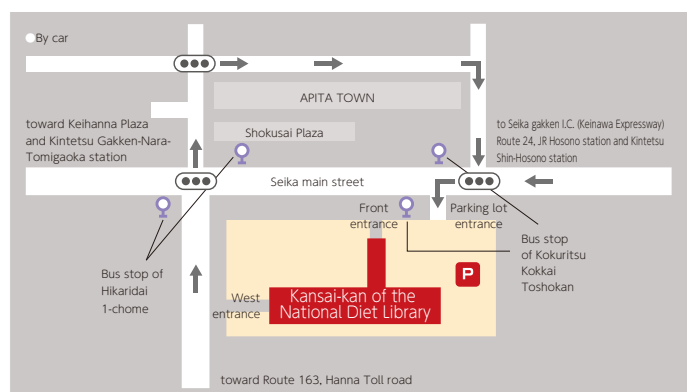
■ Library hours

Opening hours		9:30-18:00
Reading service	Reading hours	9:30-18:00
	Request for closed stack materials (registered users only)	10:00-17:15
	Inter-site request service (registered users only)	9:30-17:30
Copying service	Same-day photoduplication	9:30-17:00
	Printouts of electronic materials (including microform collections)	9:30-17:00
	Self-service photoduplication	9:30-17:30
	Later date photoduplication (registered users only)	10:00-17:45
Reference service		9:30-18:00
User registration		9:30-18:00

■ Library holidays Sundays, national holidays, year-end and New Year's holidays, 3rd Wednesday of each month (for stocktaking)

Please be aware that National Diet Library facilities are subject to close without prior notice during natural disasters or other public emergencies. Announcements are posted on the NDL website.

Access Map



■ Access by Public Transport

- From "Shin-Hosono Station" on the Kintetsu Kyoto Line or "Hosono Station" on the JR Gakkentoshi Line, take Nara Kotsu Bus 36 (Hikaridai Loop), 56, 58, or 59 (bound for "Gakken-Nara-Tomigaoka Station"), or 46 (bound for "Hikaridai-3-chome") or 47 (bound for "ATR") and get off at the "Kokuritsu Kokkai Toshokan" stop.
- From "Gakken-Nara-Tomigaoka Station" on the Kintetsu-Keihanna Line, take Nara Kotsu Bus 56 or 59 (bound for "Hosono Station") and get off at the "Kokuritsu Kokkai Toshokan" stop.

■ Free parking available for about 200 vehicles.

Kansai-kan of the National Diet Library
8-1-3 Seikadai, Seika-cho, Soraku-gun, Kyoto, Japan 619-0287
+81-774-98-1200 (automated voice information service)

■ <https://www.ndl.go.jp/en/kansai>



Published in March 2026

国立国会図書館
National Diet Library, Japan

リサイクル適性 (A)

この印刷物は、印刷用の紙へリサイクルできます。