

# National Diet Library



International Library of  
Children's Literature



Tokyo Main Library



Kansai-kan of the  
National Diet Library

The National Diet Library (NDL) is the parliamentary library of the National Diet of Japan and was founded in 1948 by the National Diet Library Law, in accordance with Article 130 of the Diet Law, which states in part that “The National Diet Library shall be established in the Diet by a separate law, in order to assist Diet Members in their study and research.”

## Mission and Role The mission and role of the NDL is stipulated by the National Diet Library Law.

### Mission

“The NDL is hereby established as a result of the firm conviction that truth makes us free and with the object of contributing to international peace and the democratization of Japan as promised in our Constitution.” (From the Preamble of the National Diet Library Law)

### Role

“The National Diet Library shall collect books and other library materials for the purpose of assisting the members of the National Diet in the performance of their duties and also for the roles of providing certain library services as hereinafter specified for the executive and judicial agencies of the national government and for the people of Japan.” (From Article 2 of the National Diet Library Law)

## Basic Roles The NDL is tasked with the following three basic roles.



Support to the Diet



Acquisition and preservation of materials and information

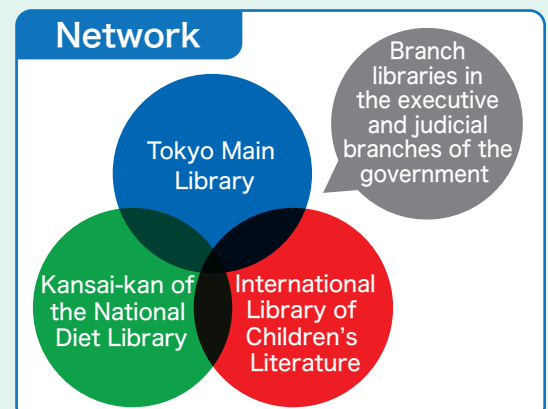
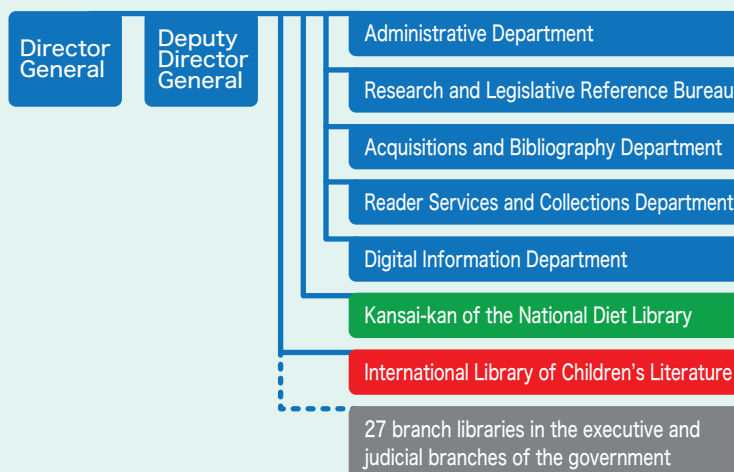


Providing the public with access to information resources

## Organization The NDL is a part of the legislative branch, the National Diet of Japan.

The NDL comprises three main facilities: the Tokyo Main Library, the Kansai-kan, and the International Library of the Children’s Literature, which each play important roles in providing comprehensive library services as part of a single national organization.

The NDL collaborates with 27 branch libraries operated by agencies in the executive and judicial branches of the Japanese government, which form a network and collaborate closely in providing general library services.





# Support to the Diet

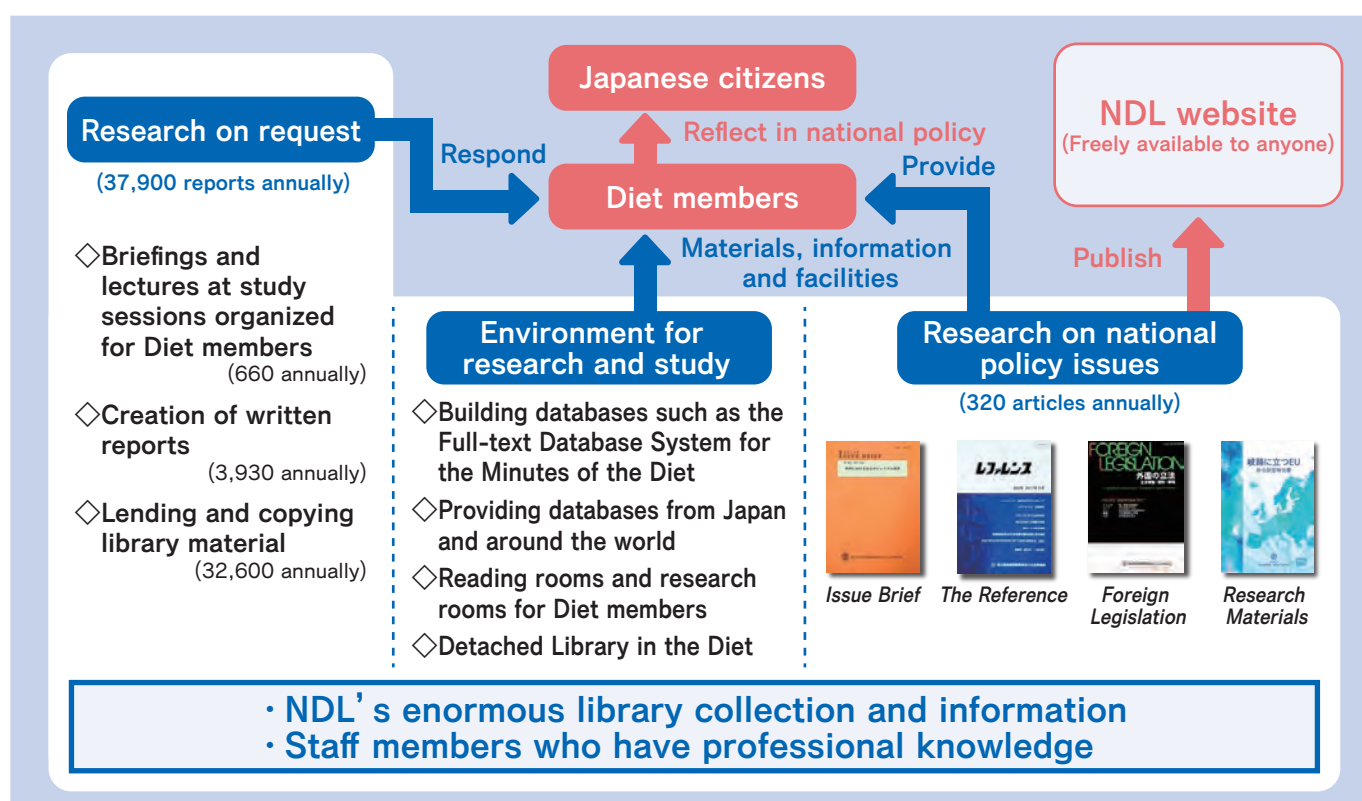
**1** The NDL supports the Diet and assists the activities of Diet members, using its professional expertise in research and accumulated information resources.

## Research on request

The NDL carries out legislative research on a wide variety of national issues related to politics, economy, society, or science and technology in response to requests from Diet members.

## Research on national policy issues

The NDL carries out research and publishes research papers in advance on subject matter it anticipates will prove germane to national politics.



**2** The NDL database of the minutes of the Diet and laws in the Japanese language keep the general public informed of Diet activities via the internet.

The database provides information on deliberations at each stage of the legislative process including enactment, revision or abolition of bills submitted to the Diet and the Imperial Diet. Users can also refer to the text of minutes, laws and bills from links.

Full-text Database System for the Minutes of the Diet

<https://kokkai.ndl.go.jp/>



(Built in cooperation with the House of Representatives and the House of Councillors.)

Database System for the Minutes of the Imperial Diet

<https://teikokugikai-i.ndl.go.jp/>



Index Database of Japanese Laws, Regulations and Bills

<https://hourei.ndl.go.jp/>





# Acquisition and preservation of materials and information

## 1 Material Acquisition

### Domestic Publications—Legal Deposit System

The National Diet Library Law requires that all publications published in Japan, including microfilms, CDs, DVDs, maps, and more, must be deposited with the NDL. Through the Legal Deposit System, the NDL collects many domestic publications as the only legal deposit library in Japan. It also holds domestic publications which were published before the legal deposit system was initiated. The NDL owns the largest library collection in Japan.



Legal Deposit System



### Foreign Publications

The NDL selects and collects materials on Japan, as well as materials which are useful to support Diet activities and for conducting research and studies, by purchase, international exchange, and donation.

### Websites

The NDL archives domestic websites.

- **Web Archiving Project (WARP) of the National Diet Library**  
[https://warp.da.ndl.go.jp/?\\_lang=en](https://warp.da.ndl.go.jp/?_lang=en)



### Online Publications

The NDL collects e-books and e-magazines which are free, private online publications without Digital Rights Management (DRM).

## 2 Making and Providing Bibliographic Data

The NDL provides bibliographic data of collected materials.

- **National Diet Library Online Search and Request Service (NDL Online)**  
<https://ndlonline.ndl.go.jp/>

This service enables users to search and use NDL holdings.

- **National Diet Library Search**  
<https://iss.ndl.go.jp/?locale=en>

The NDL provides services that enable integrated searches of the bibliographic data and digital archives of public libraries, archives, museums, research institutes, and the NDL. Users can access standard bibliographic data for domestic publications collected by the NDL via an Application Programming Interface (API).



Making and Providing  
Bibliographic Data



## 3 Preservation and Conservation

To preserve and ensure future access to the library materials the NDL has collected, which are the shared cultural heritage of the nation, the NDL has initiatives to digitize materials, repair damaged materials, and develop a proper environment for preservation.



Preservation  
and Conservation





# Providing the public with access to information resources

## 1 Services Available by Visiting the Library

The NDL provides services including access to materials held by the NDL, copy services, and reference services.

## 2 Services Available without Visiting the Library

### Services Available from Local Libraries

The NDL delivers materials to public and university libraries. You can also request copying and reference services through these libraries. The NDL provides a Digitized Contents Transmission Service, through which digitized versions of NDL holdings that are out-of-print or otherwise difficult to obtain are available at libraries and institutes that are partners of the NDL.

### Services Available via the Internet

The NDL provides online services available to anyone at any time.

- **NDL Online** <https://ndlonline.ndl.go.jp/>  
Remote copying services are available for registered users via NDL Online.
- **NDL Digital Collections** <https://dl.ndl.go.jp/?lang=en>  
NDL Digital Collections enables users to search and view a wide variety of digital materials.
- **Other Databases** Many other databases are also available.



## 3 Services for Persons with Print Disabilities

The NDL produces talking books of academic literature for users with print disabilities and lends them through libraries across Japan. In addition, the NDL collects Digital Accessible Information System (DAISY) data and braille data made by public libraries, and provides them to libraries and individuals through an online data transmission service for persons with print disabilities.

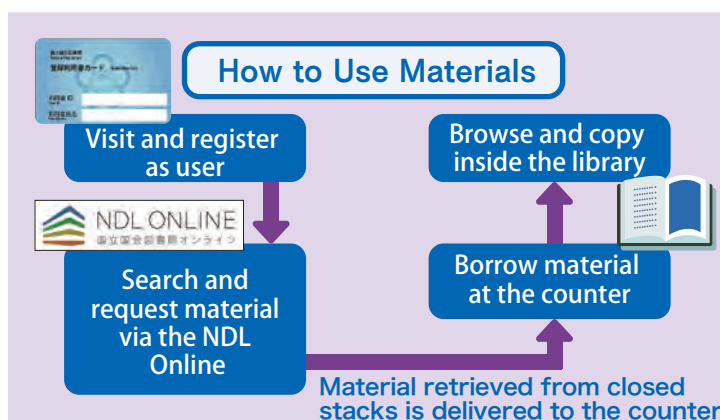


## 4 Services for Libraries

The NDL engages in collaborative projects including training programs for librarians, and distribution of information in the field of library and information science.

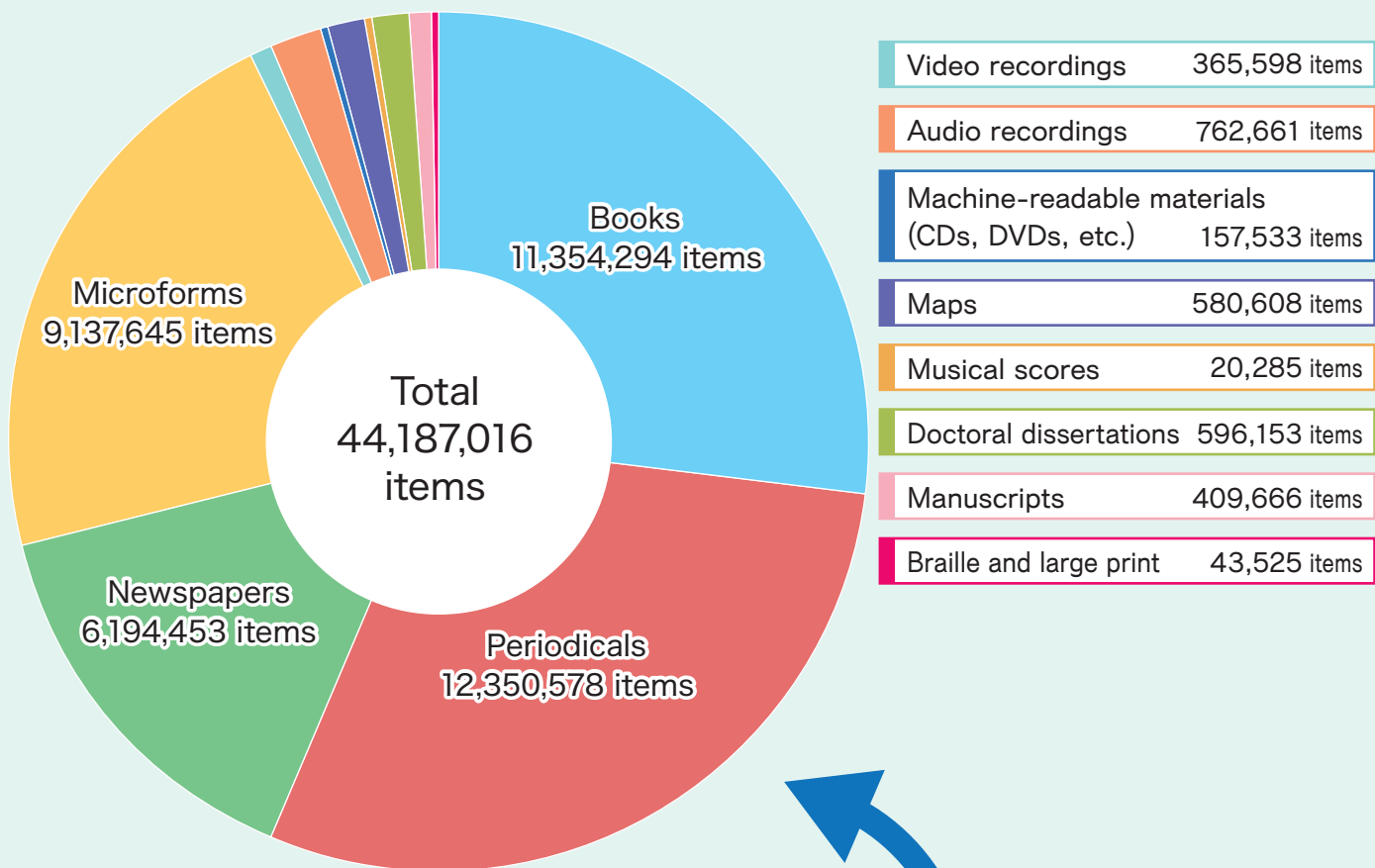
- **Collaborative Reference Database** <https://crd.ndl.go.jp/reference/>  
The NDL's Collaborative Reference Database is a Japanese-language resource, through which libraries are able to share their responses to reference questions as well as to provide information for personal study.

The NDL interacts with foreign libraries through international organizations such as the International Federation of Library Associations and Institutions (IFLA) or the Association of Parliamentary Librarians of Asia and the Pacific (APLAP) to discuss and explore solutions to common challenges facing libraries around the world.

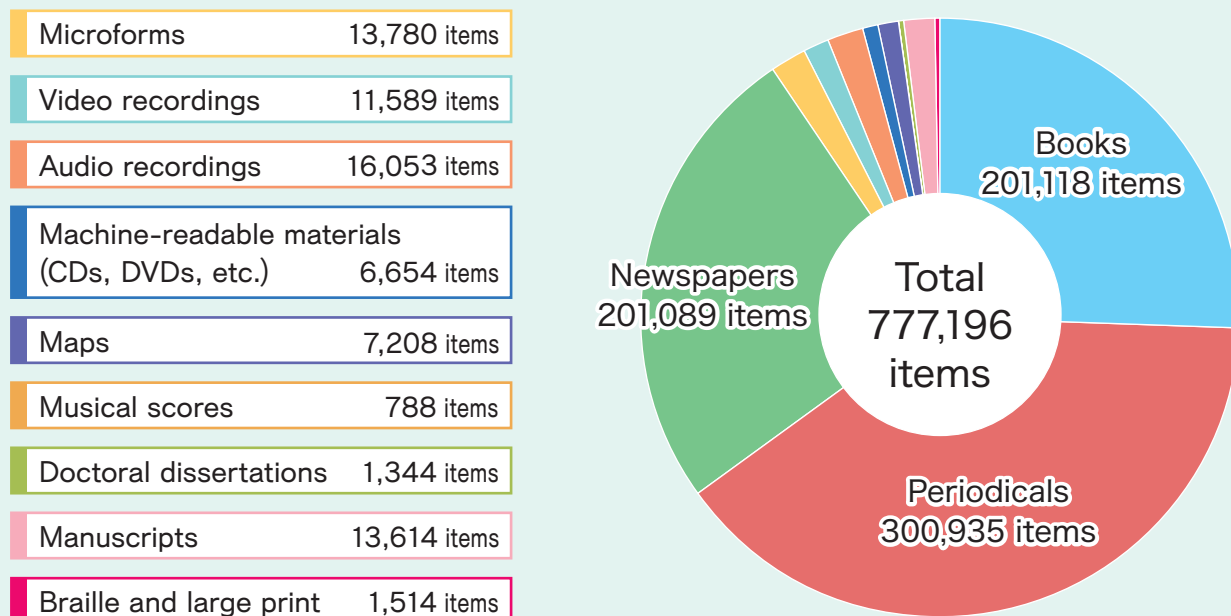


# NDL in Figures (Key statistics of FY 2018)

## Collections (domestic and foreign publications)



## Annual acquisition (domestic and foreign publications)



Services for the public		Services for libraries	
Reference services	863,691 cases	Reference services	4,416 cases
Reading services	2,185,497 items	Loan services	14,875 items
Photoduplication services	1,320,116 cases	Libraries participating in the Collaborative Reference Database	805 libraries
Remote photoduplication services	285,409 cases		
On-site users		Digital library services	
Total	791,370 people	Visitors to our website	18,275,403 cases
Tokyo Main Library	575,756 people	Viewers of digitized materials on the NDL Digital Collections	66,234,507 cases
(2,071 per day on average)			
Kansai-kan of the NDL	72,373 people	Digitized materials available on the NDL Digital Collections	
(260 per day on average)		Number of digitized materials	3,929,535 items
International Library of Children's Literature	143,241 people	Number of materials available via the internet	1,574,119 items
(503 per day on average)		Available at partner libraries	1,510,004 items
Services for the Diet		Available only at the NDL	845,412 items
Research on request	37,897 cases	Materials digitized by the NDL (Approximate)	
Research on national policy issues	323 cases	Total	2,690,000 items
Services for the executive and judicial branches of the government		Number of materials available via the internet	540,000 items
Research and reference	721 cases	Available at partner libraries	1,500,000 items
Loan services	6,046 items	Available only at the NDL	650,000 items

Buildings and Storages (Approximate)					
	Total site area	Total floor space	Total area of reading rooms	Total storage space	Storage capacity
Tokyo Main Library	30,000 m <sup>2</sup>	148,000 m <sup>2</sup>	19,000 m <sup>2</sup>	78,000 m <sup>2</sup>	12,000,000 volumes
Kansai-kan of the NDL	83,000 m <sup>2</sup>	84,000 m <sup>2</sup>	4,300 m <sup>2</sup>	39,000 m <sup>2</sup>	11,000,000 volumes
International Library of Children's Literature	7,700 m <sup>2</sup>	13,000 m <sup>2</sup>	2,100 m <sup>2</sup>	3,100 m <sup>2</sup>	1,050,000 volumes

※Storage capacity is calculated based on a book thickness of 3cm.

Staff members (excluding staff of branch libraries in the executive and judicial branches of the government)		Budget (Approximate)	
Number of regular staff members as of April 2019	891 members	Initial budget for FY 2019	27.28 billion yen
		Budget for materials	2.36 billion yen

## History

The NDL has two predecessors. One is the Libraries of the House of Peers and the House of Representatives, which comprised the old parliament under the former Constitution of Japan. The other is the Imperial Library, which was attached to the Ministry of Education. Most of these libraries' collections were transferred to the NDL and form the basis of the current collection.

The National Diet Library Law was enacted in February 1948, and the NDL opened on June 5 of the same year. The NDL celebrated its 70th anniversary in 2018.

1948	NDL opened to the public using the former Akasaka Detached Palace (now the State Guest House) as a temporary facility
1949	Former Imperial Library became the Ueno Branch Library of the National Diet Library
1961	First phase of current Nagata-cho facility completed
1968	Main building of Nagata-cho facility completed
1986	Annex of Nagata-cho facility completed
2000	International Library of Children's Literature partially opened in renovated former Ueno Branch Library
2002	International Library of Children's Literature fully opened
2002	Kansai-kan of the National Diet Library opened
2015	Service started in Arch Building of the International Library of Children's Literature
2020	Storage Annex of the Kansai-kan completed

## Tokyo Main Library

1-10-1 Nagata-cho, Chiyoda-ku, Tokyo 100-8924, Japan  
Phone: +81-3-3581-2331  
+81-3-3506-3300 (automated voice information service)



<https://www.ndl.go.jp/en/index.html>

### Main Collections

- Books, periodicals, newspapers and electronic publications published in Japan and collected via the Legal Deposit System
- Foreign books and newspapers
- Parliamentary and legislative documents, official publications, publications of international organizations, maps, rare books and old materials, modern Japanese political history documents, materials on the Allied Occupation of Japan, audio-visual materials



### Opening Hours

From 9:30 a.m. to 7:00 p.m. (5:00 p.m. on Saturdays)\*

### Closed

Sundays, national holidays, the year-end and New Year holidays, and the third Wednesday of every month (for refiling)

### Patrons

Must be 18 years of age or older to enter the library. Please contact us beforehand if you are 17 years of age or younger and wish to enter the library.

## Kansai-kan of the National Diet Library

8-1-3 Seikadai, Seika-cho, Soraku-gun, Kyoto 619-0287, Japan  
Phone: +81-774-98-1200 (automated voice information service)



<https://www.ndl.go.jp/en/kansai/index.html>

### Main Collections

- Foreign periodicals, science and technology materials, Japanese doctoral dissertations, scientific research reports under grants from the Ministry of Education, Culture, Sports, Science and Technology, talking books of academic literature for persons with print disabilities
- Asian-language and Asia-related materials



### Opening Hours

From 9:30 a.m. to 6:00 p.m.\*

### Closed

Sundays, national holidays, the year-end and New Year holidays, and the third Wednesday of every month (for refiling)

### Patrons

Must be 18 years of age or older to enter the library. Please contact us beforehand if you are 17 years of age or younger and wish to enter the library.

## International Library of Children's Literature

12-49 Ueno Koen, Taito-ku, Tokyo 110-0007, Japan  
Phone: +81-3-3827-2053  
+81-3-3827-2069 (automated voice information service)



<https://www.kodomo.go.jp/english/index.html>

### Main Collections

- Children's literature and periodicals published in Japan and overseas
- Materials related to children's literature



### Opening Hours

From 9:30 a.m. to 5:00 p.m.\*

### Closed

Mondays, national holidays (except Children's Day on May 5), the year-end and New Year holidays, and the third Wednesday of every month (for refiling)

### Patrons

Anybody can use the library.